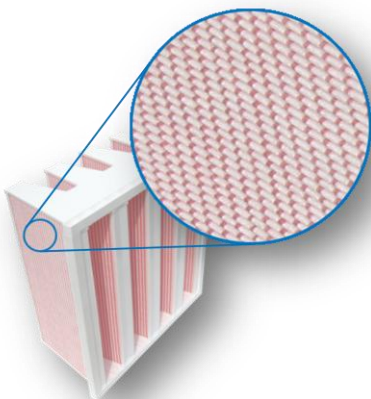


## PERFORMANCE DATA SHEET - 4V-Cell



### MAKE THE AEOLUS 12 INCH V-CELL YOUR CHOICE!

- ✓ Very large media area
- ✓ High filtration efficiencies
- ✓ Optimum filter for critical applications
- ✓ Outstanding stability and strength
- ✓ Incinerable construction
- ✓ Waterproof construction
- ✓ Will not support microbial growth



Our 12 inch deep All Synthetic V-Cell Filter with extended filter surface provides a large media area for service in critical applications.

**DESIGN.** Aeolus V-Cell Filters feature synthetic microfiber filter media with a 3-dimensional, progressive design for optimum dust holding capacities. Our Aetec Filters (“AT” products) even contain nanofibers which are uniquely integrated into the filter media to capture the smallest particles. All our fibers are produced in a solvent-free, melt-based and environmentally friendly proprietary process and do not contain any chemical binder. The endless fibers are highly damage resistant and totally non-shedding.

**PLEAT TECHNOLOGY.** Aeolus filters provide a unique pleating technology that leads to the excellent product stability Aeolus filters are known for. But it is also responsible to preserve the perfect V-shaped pleat geometry throughout handling and usage. Optimum air flow is assured under all relevant circumstances.

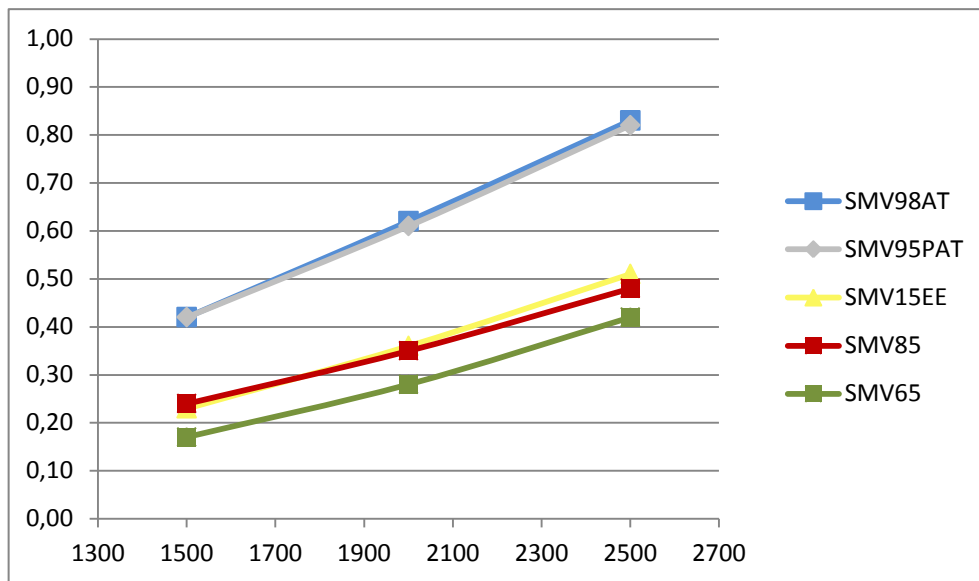
**APPLICATIONS.** The synthetic V-Cells are widely used in industrial filtration applications, ensuring optimum IAQ in plants and factories, cleaning intake air for gas turbines and providing exceptional performance in humid environments. An excellent choice for tough applications and extended service life.



# PERFORMANCE DATA SHEET - 4V-Cell

## TECHNICAL DATA V-Cell

Product	Efficiency range	MERV classification	Air Flow [cfm]		
			1500	2000	2500
SMV98 AT	98-100%	MERV 16+ (95 DOP)	0.48	0.70	0.97
SMV95PAT	95-100%	MERV 16	0.43	0.63	0.86
SMV15EE	90-95%	MERV 15	0.23	0.36	0.51
SMV85	80-90%	MERV 13	0.26	0.36	0.50
SMV65	60-65%	MERV 12	0.21	0.31	0.44



**Fig. 1:** Pressure Drop Data of Aeolus 12 inch V-Cell 24x24x12",  
Recommended airflow: 2000 cfm / 500 fpm; Independently Tested

- ✓ **UL 900 certified**
- ✓ Inherent antimicrobial properties
- ✓ Completely hydrophobic
- ✓ Continuous operating temperature up to 175° F (80° C), short term up to 210° F (100° C)
- ✓ Can be operated up to 125% of rated air flow
- ✓ Recommended final resistance is 1.40 in w.g., higher resistances are possible – please ask